

Network Video Recorder

Quick Start Guide

1. Notes

- Please read this instruction carefully for correct use of the product and preserve it for reference purposes.
- All the examples and pictures used here are for reference only.
- There may be several technically incorrect places or printing errors in this manual. The updates will be added into the new version of this manual. The contents of this manual are subject to change without notice.
- This device should be operated only from the type of power source indicated on the marking label. The voltage of the power must be verified before using the same.

2. Packing Check

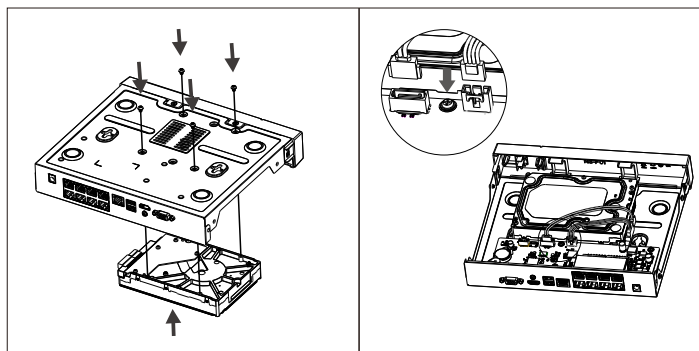
Please check the device and the accessories after getting the device. If there are any damages, shortages or defects, please contact your dealer immediately.

3. Installation

• HDD Installation

This series of the product supports 1 SATA hard drive. Please make sure that the device is powered off before the installation. The pictures of the installation are only for reference, please take the real object as the standard.

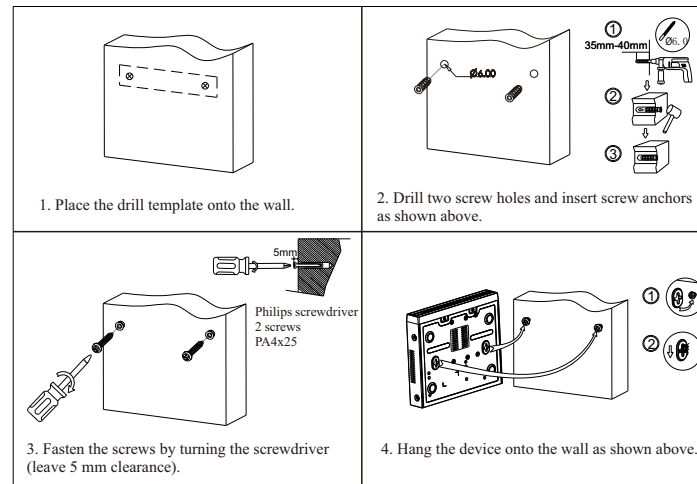
- ① Loosen the screws to open the cover.
- ② Put the HDD on the bottom of the device.
- ③ Turn over the machine and secure the HDD with the screws.
- ④ Connect the power and data cables.



- ⑤ Install back the cover and secure it with the screws.

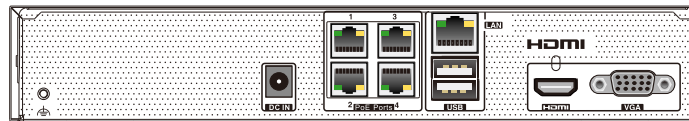
Tips: Please check the inside structure of the device and make sure the cables connected well before installing the cover back. Please format the HDD before using.

• Wall Mounting

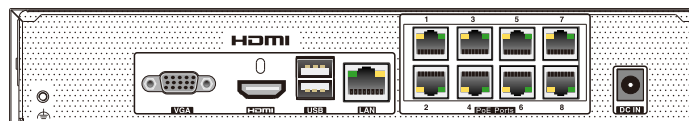


4. Rear Panel Instruction

The interfaces of the rear panel are for reference only.



Rear Panel for 4 CH



Rear Panel for 8CH

Name	Description
DC IN	Connector for power input
PoE Ports	PoE network ports; connect to PoE IP cameras
LAN	Ethernet port
USB	Connector for USB device (like USB mouse, USB storage device for backup or upgrade, etc.)
HDMI	Connect to high definition display device
VGA	Connect to monitor

5. Startup & Shutdown

► Startup

- ① Connect the monitor and the power.

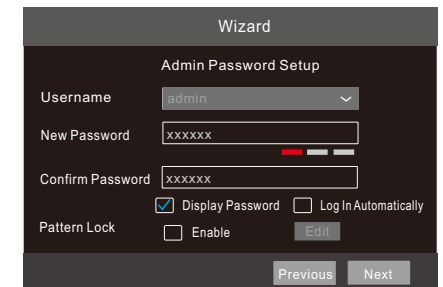
- ② The device will boot. Please wait for a while.
- ③ A wizard window will pop up.

► Shutdown

Click “Start” and then select “Shutdown” icon. This will bring up a shutdown window. The device will shut down after entering the username and password. Then follow the direction to disconnect the power.

6. System Login

You must configure the wizard if you start the NVR for the first time. Choose the language and read the privacy statement. Then set the date, time and zone as needed. After that, set the login password.



The default username is **admin**. Set your own password when you use the wizard for the first time. Enable pattern lock and click “Edit” to set the pattern lock. Then set camera default password, email and security questions and answers according to the tips.

7. Network Configuration & Add IP Camera

- ① Enter IP address, subnet mask, gateway, etc. If using DHCP, please enable DHCP in both the NVR and the router.
- ② The internal ethernet port is the port which connects all the PoE ports with the NVR system. The PoE ports are available if the internal ethernet port is online; if it is offline, all the PoE ports will be unavailable.
Mode: Non-long line mode or long line mode can be selectable. If the transmission performance of your network cables connected the PoE ports and IPC are not so good or these network cables are very long, you can choose long line mode.
- ③ Enter HTTP/HTTPS port and server port as needed.

④ Add Camera. Click “Next” to go to the following interface.

Click “Refresh” to refresh the list of online IP cameras which are in the same local network with the NVR. If a searched IP camera is not activated, you can check the camera and click “Activate” to activate this camera first. Click “+” to add the searched camera. Click “Add All” to add all the cameras in the list. Click to delete the added camera. Click “Delete All” to delete all the added cameras.

⑤ Click to edit a searched IP camera as shown in the picture above. Enter the new IP address, subnet mask, gateway, username and password of the camera. Click “OK” to save the settings. Click to edit the added camera. Enter the new camera name, IP address, port, username and the password of the camera. You can click “Test” to test the effectiveness of the input information. Click “OK” to save the settings. You can change the IP camera name only when the added camera is online. Click “Next” to continue.

8. Disk Settings

You can view the disk number, disk capacity of the NVR and serial number, Read/Write status of the disk in the wizard or disk management interface. Click “Format” to format the disk.

9. Record Settings

You can set the record in the wizard interface or by clicking Start → Settings → Record.

Two record modes: auto and customization.

Auto Mode: Select one auto mode in the interface and then click “Next” to save the settings. Click “Advanced/Customized” to self-define a record mode.

Customization: Set the record of each camera. Please the schedule as needed. Click “Next” to continue.

10. NAT

You can enable the NAT function in the interface or set it in the network configuration after exiting the wizard. You can scan the QR code through the mobile surveillance APP available for iOS or Android to easily view your cameras.

► Web Browser Access Through NAT Function

Go to Start → Settings → Network → NAT tab. Enable NAT and select the NAT Server Address. Click “Apply” to save the parameters.

Enter the visit address in the address bar of your browser and then press enter to go to the following interface. If you are the first time to access the NAT, you shall download and install the plug-in according to the popup tips. After installing the plug-in successfully, it will appear the login box.

Device Serial Number: Click Start → Settings → Network→ NAT to view the serial number.

Username: The username of the NVR. The default username is admin.

Password: The password of the NVR. The password is set by yourself when you configure the wizard for the first time.

11. Cloud Upgrade

Before using this function, please enable NAT2.0. Then click “Cloud Upgrade” in the wizard interface. Go to Start →Settings →Network → Cloud Upgrade interface and click “Upgrade” to upgrade your device if it is not the latest version.

12. Manual Recording

Before recording, please install a HDD. In the live interface you can see the menu toolbar. Click to start recording. Click it again to stop recording. You can also click to check the status of the recording.



13. Playback

► Instant playback

Click on the tool bar at the bottom of the preview camera window to play back the record from 5 minutes ago or right click to select “Instant Playback” and then select the instant playback time to play back the record.

► General playback

Click on the tool bar at the bottom of the live view interface or click Start → Playback to go to the playback interface as shown below. You can also add the playback cameras manually. Click in the playback window to pop up the “Add Camera” window. Check the cameras in the window and then click “Add” to add playback camera. The record files of the added playback camera will be played in the playback interface.